

Título Diseño de Hotel - Seminario Interno de Transferencia

Tipo de Producto Material Didáctico

Autores Girod, Gastón Eduardo & Cereghetti, Jorge

Código del Proyecto y Título del Proyecto

A18S07 - Diseño de Hotel

Responsable del Proyecto

Girod, Gastón Eduardo

Línea

Hábitat

Área Temática

Arquitectura

Fecha

Octubre 2018

INSOD

Instituto de Ciencias Sociales y Disciplinas
Proyectuales

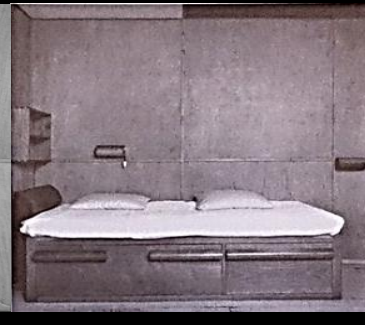
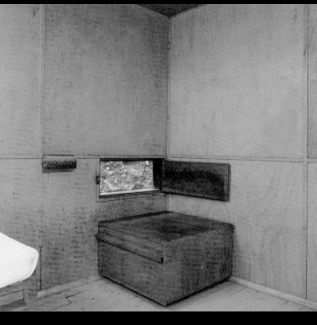
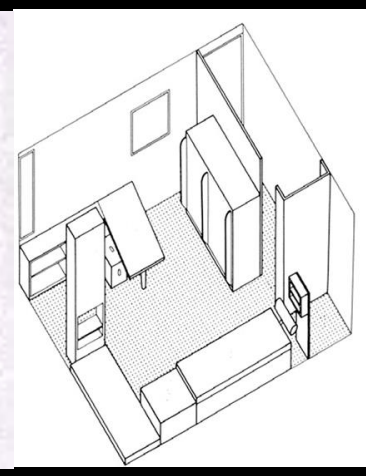
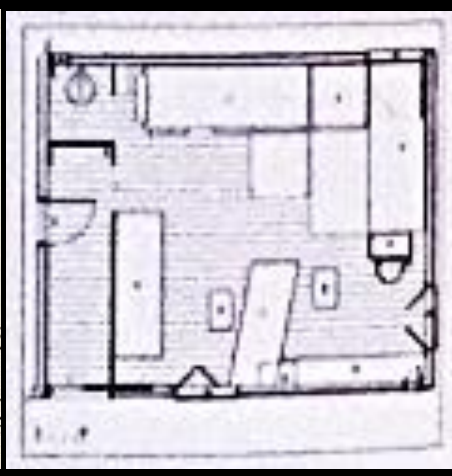
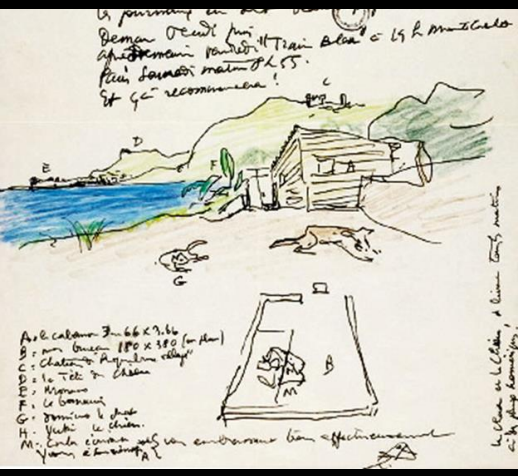
FUNDACIÓN
UADE

UADE

Espacios Hoteleros mínimos

UADE

Cabañas



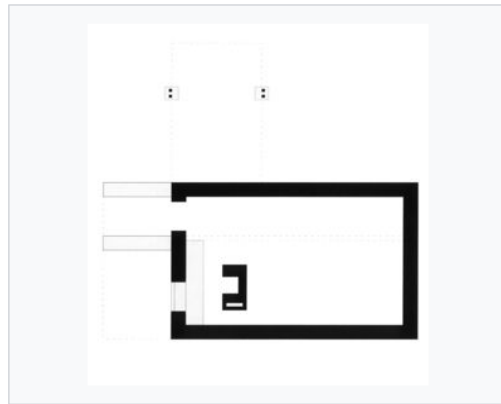
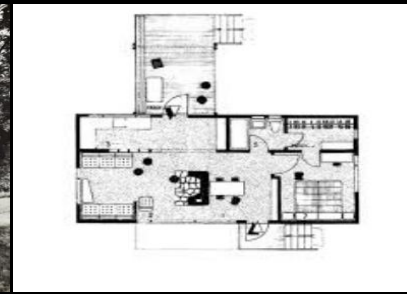
Petit Cabanon, Le Corbusier. Roquebrune, Cap Martin. Francia, 1951.



Casa de verano. Prototipo diseñado por Gerrit T. Rietveld, con T.Schoder en 1937.



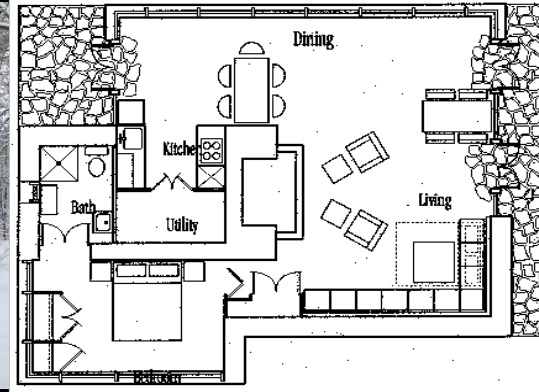
Villa Le Lac. Le Corbusier 1922-1924. 64 m2. Ubicación Corseaux, Vevey, Suiza.



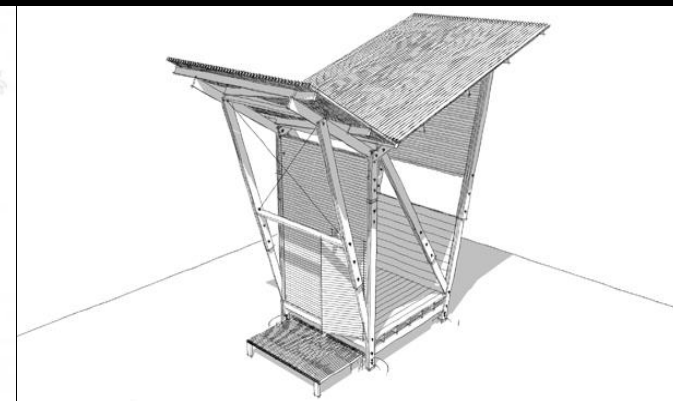
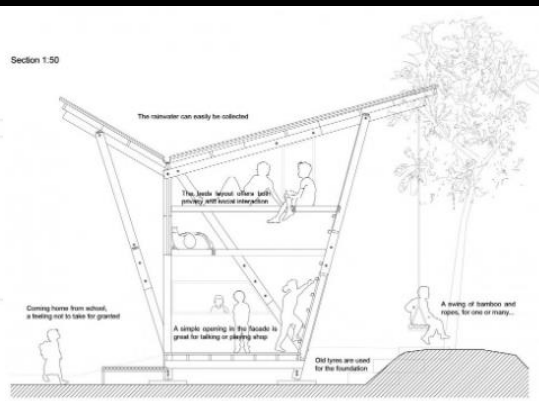
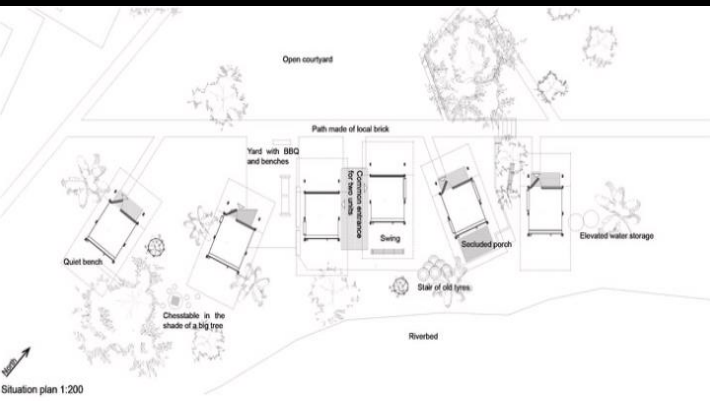
Planta sótano



Cabaña Chamberlain. Walter Gropius y Marcel Breuer, Wayland , 1940.



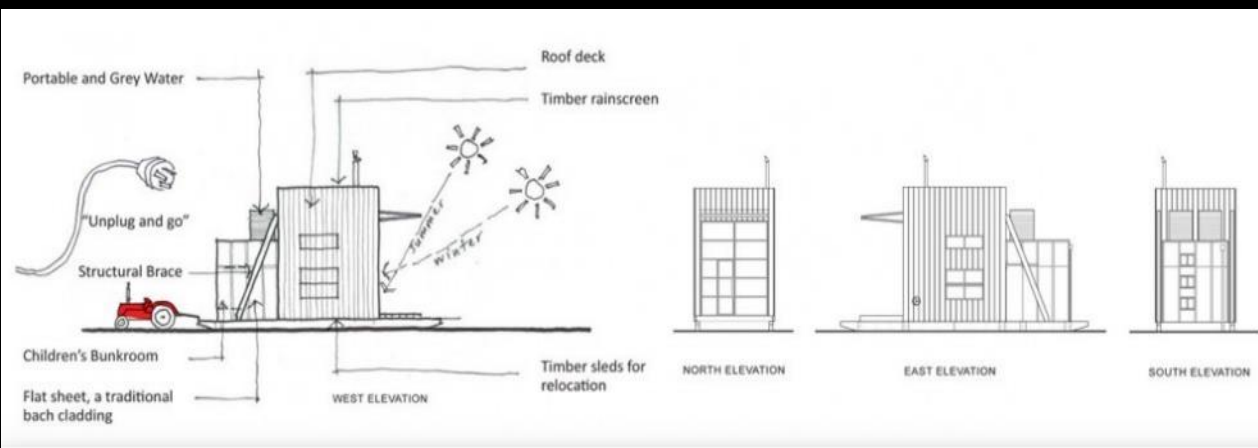
Seth Peterson Cottage. Frank Lloyd Wright, Mirror, Lake, Wisconsin, 1958/1993.



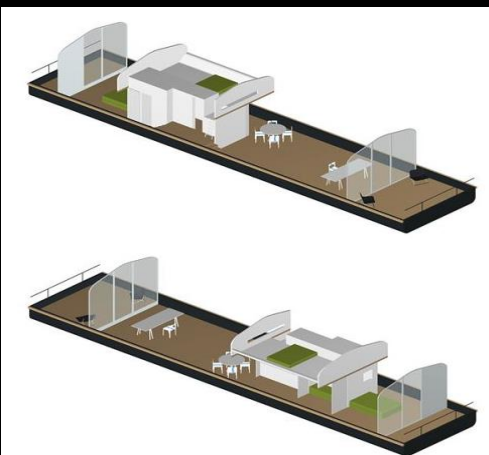
El Soe Ker Tie House. Noh Bo, Thailandia.



Soleta ZeroEnergy One por FITS. Bucarest, Rumania. .



Whangapoua. Crosson Clarke Carnachan. Coromandel, Nueva Zelanda. 2011



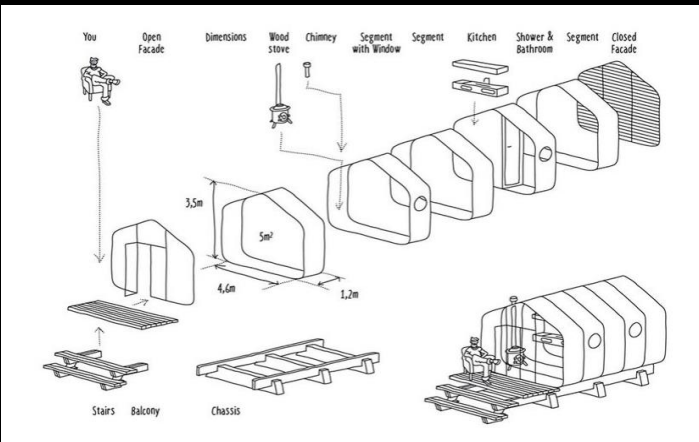
La casa Flotante. Roman y Erwan Bouroullec. Paris, Francia 2006.



Airstream. Jackson Center, Ohio, Estados Unidos.

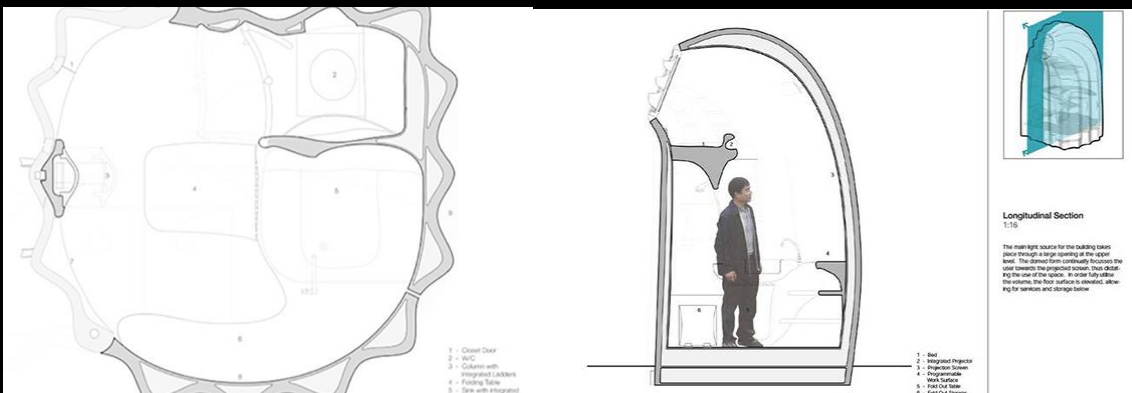


Nomads Home. Hobby y Gerold Peham, nomadhome – Seekirchen, Austria 2005.



Wikkelhouse . Holanda,

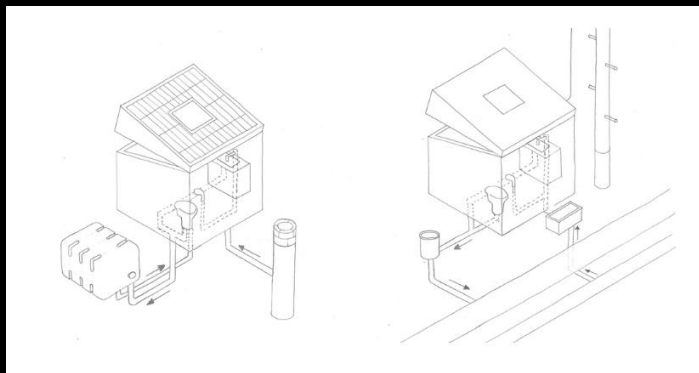
UADE **Espacios mínimos**



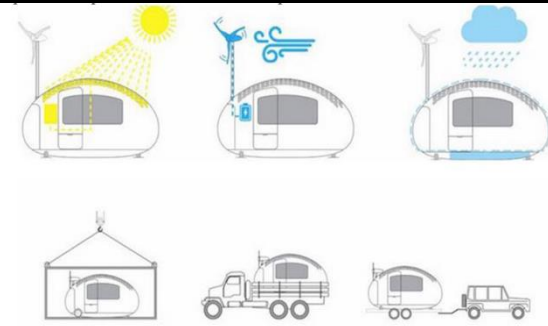
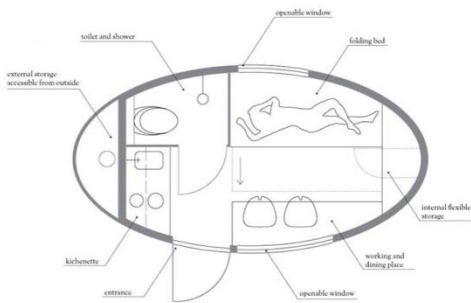
Longitudinal Section
 1:10

The main light source for the building comes from through a large opening at the upper wall. The internal floor continuously recedes from side towards the longitudinal corner. This allows for the view of the outside. In one fully after the returns, the floor surface is elevated, allowing for storage and storage below.



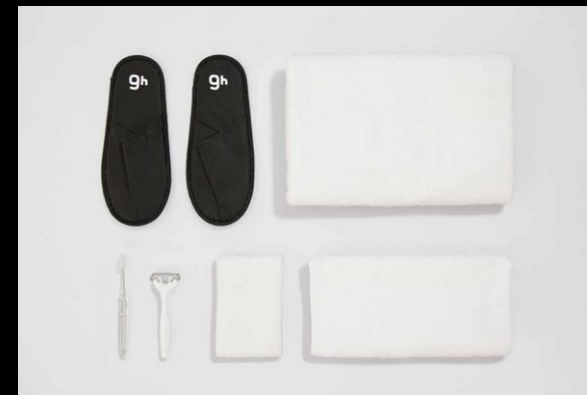
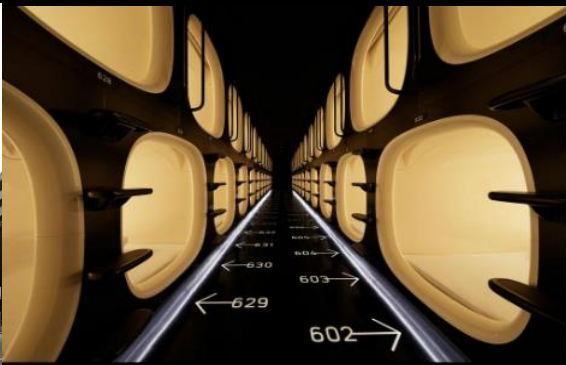


Arquitectura mínima 1: PACO. Jo Nagasaka y Schemata Architects. 2009



Ecocapsule. Nice&Wise. Eslovaquia. 2008

UADE **Sleepbox**



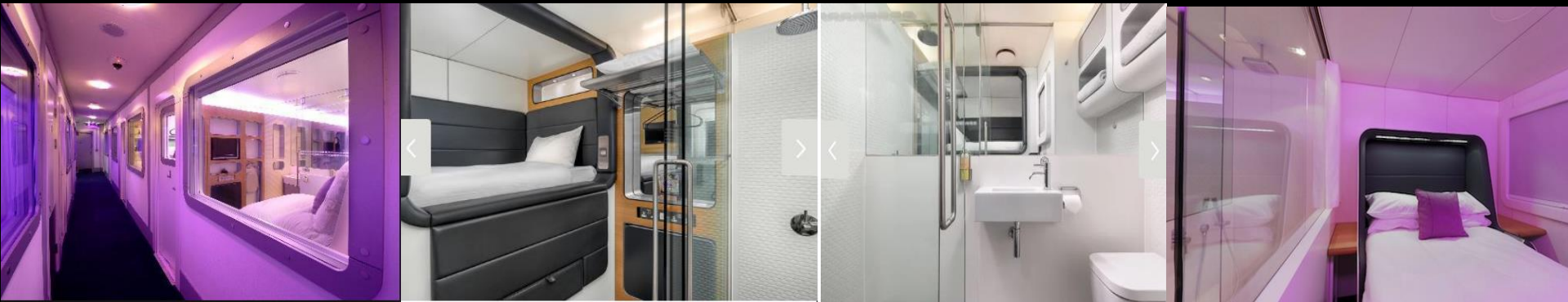
nine hours Shinjuku-North



Sleepbox. Arquitectos Mikhail Krimov y Alexei Goryainov, Aeropuerto Moscú

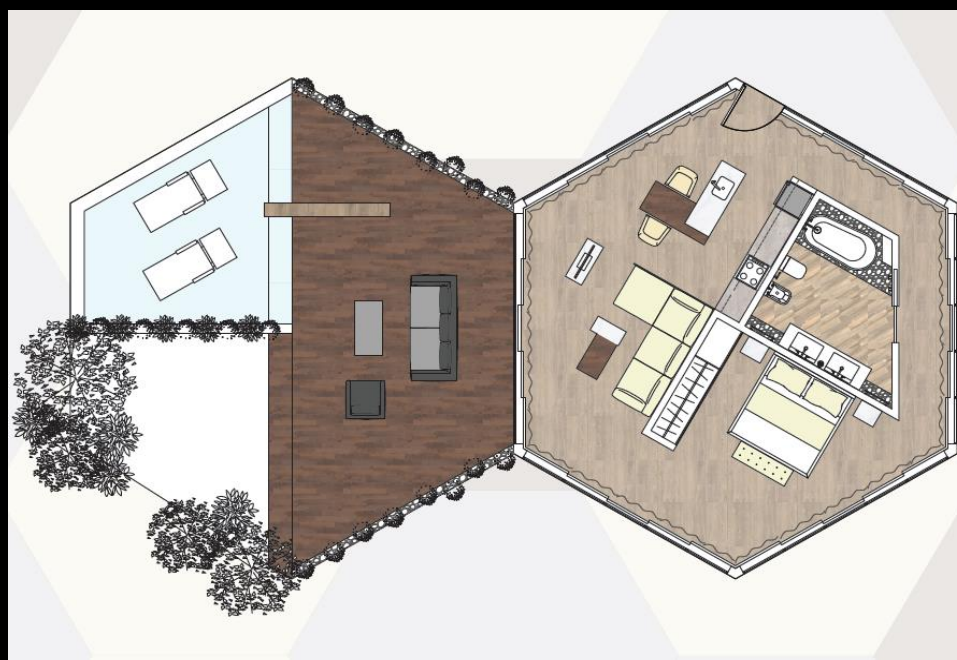


Napcabs. Aeropuerto Munich



Yotel. Miami.

UADE **Proyectos seleccionados**

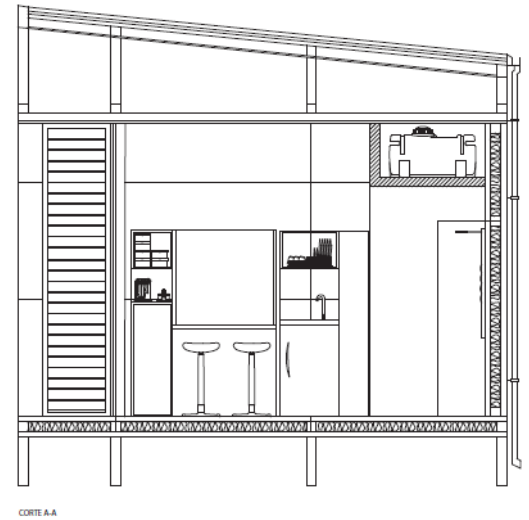
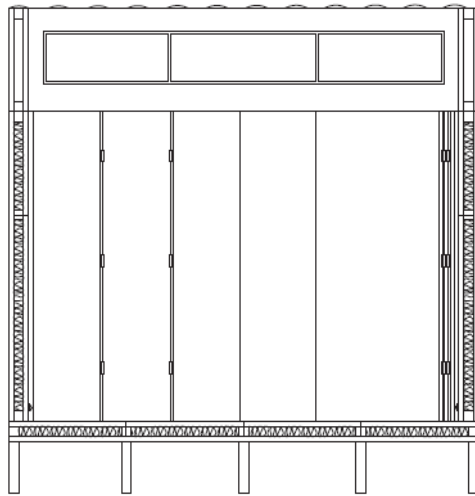
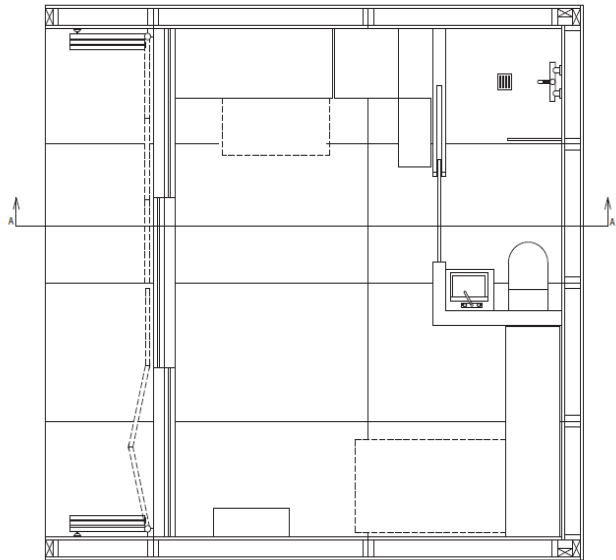


Abud – Barrera Borla - Story



Díaz - Gorroño - Oliver

UADE **Módulo UADE**



Módulo UADE